

Scaled data based on original data using
LM-79-08 Approved Method: Electrical and Photometric Measurements of Solid-
State Lighting Products

Test Report Prepared for
Cooper Lighting Solutions
(formerly Eaton)

Brand: INVUE

Report Number: P149373

Luminaire Tested: **VWM-F03-LED-E1-SL2-HSS-8030**

Issue Date: 03/03/2020

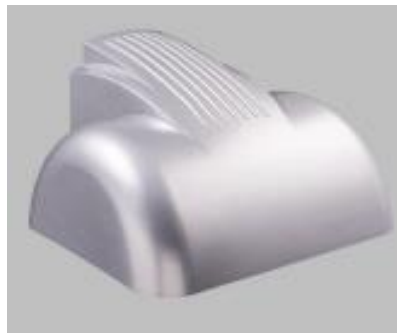
Test Information

Test Method: LM-79-08
Report Number: P149373
REPORT IS SCALED FROM IESNA LM-79-08 TEST DATA (P33726)
Test Lab: INNOVATION CENTER-P3
Issue Date: 03/03/2020
Manufacturer: COOPER LIGHTING SOLUTIONS (FORMERLY EATON)
Product Line: INVUE
Catalog Number: VWM-F03-LED-E1-SL2-HSS-8030
Description: VISION WALL MEDIUM LED LUMINAIRE
(3) LIGHTBARS WITH AccuLED OPTICS - TYPE 2 W/ SPILL LIGHT CONTROL AND HOUSE SIDE SHIELD
Light Source: (21) 3000K CCT, 80 CRI LEDs
Ballast/Driver: -

Summary

Lumens per Lamp: N/A
Luminaire Lumens: 3832.6 lumens
Efficiency: N/A
Efficacy: 48.9 lumens/watt
Luminous Opening: Rectangular (W 0.5' x L: 1' x H: 0')
IES Classification: Type II - Short - Non-Cutoff
BUG Rating: B0 - U0 - G1

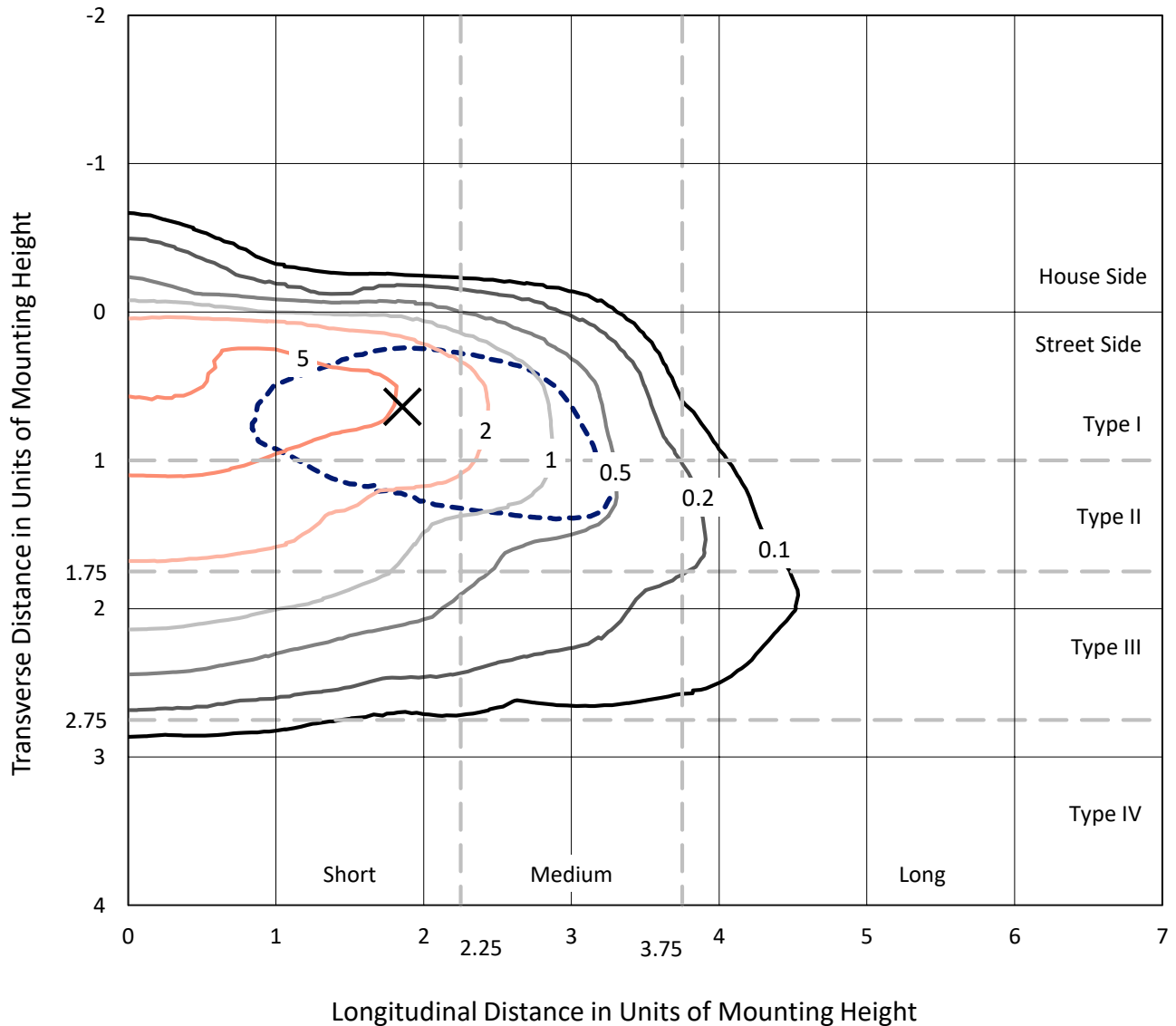
Input Watts (W): 78.3
Input Voltage (V): NR
Input Current (Ain): NR
Voltage Rise (V): NR
Power Factor: NR
Total Harmonic Distortion (THDi): NR
Frequency (hertz): 60
Stabilization Time: NR
Operation Time: NR
Ambient Temperature (°C): NR
Test Distance: 25 FT



REPORT NUMBER: P149373
 CATALOG NUMBER: VWM-F03-LED-E1-SL2-HSS-8030

Iso-Footcandle Lines of Horizontal Illumination

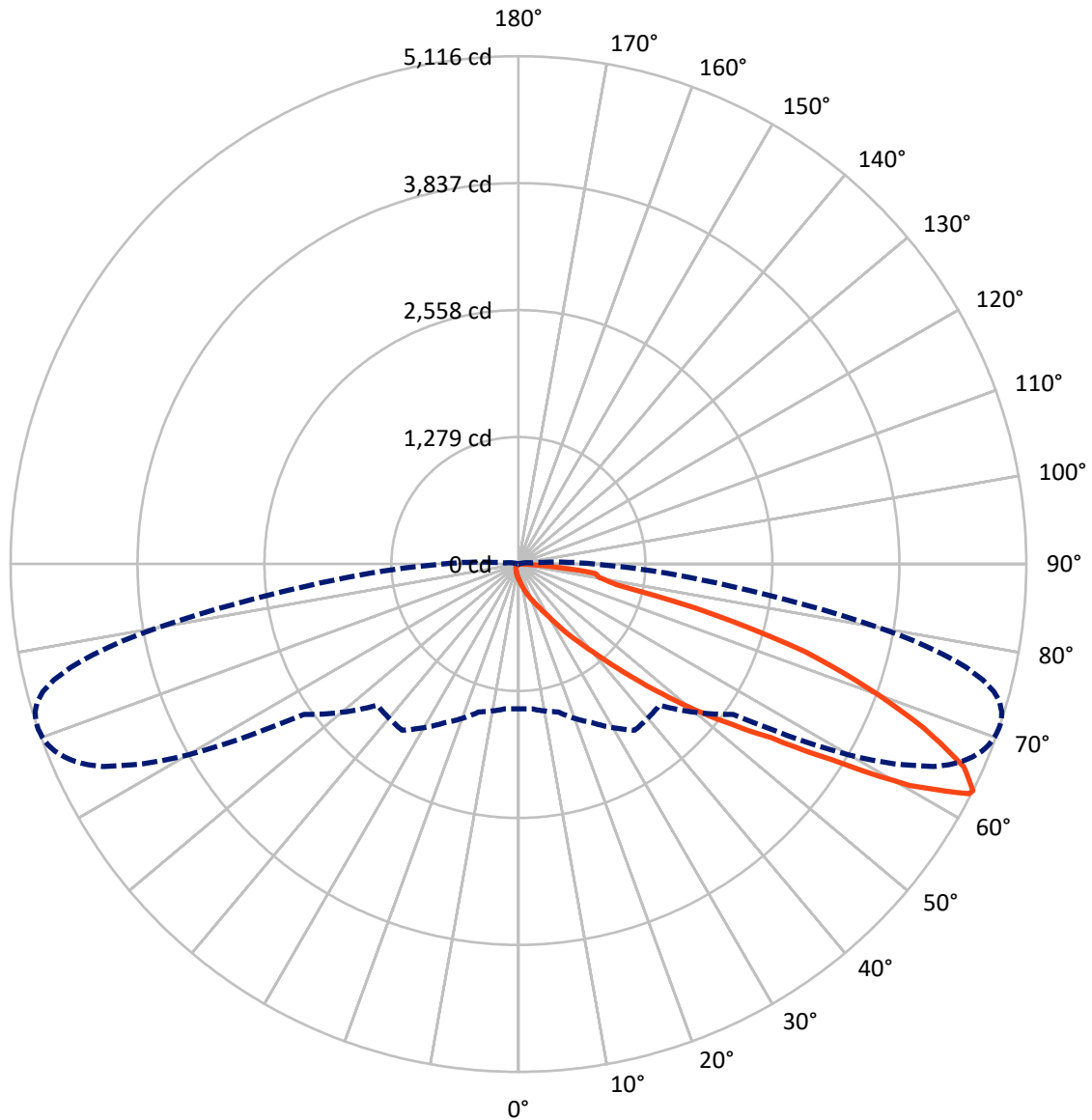
× Max cd
 - - - 1/2 Max cd



Based on 10 foot mounting height. Maximum calculated value = 8.1 fc
 Type II - Short - Non-Cutoff

REPORT NUMBER: P149373
CATALOG NUMBER: VWM-F03-LED-E1-SL2-HSS-8030

Luminous Intensity Polar Plot



— Vertical Plane Through 71-Deg Lateral - - - Horizontal Cone Through 63-Deg Vertical

REPORT NUMBER: P149373

CATALOG NUMBER: VWM-F03-LED-E1-SL2-HSS-8030

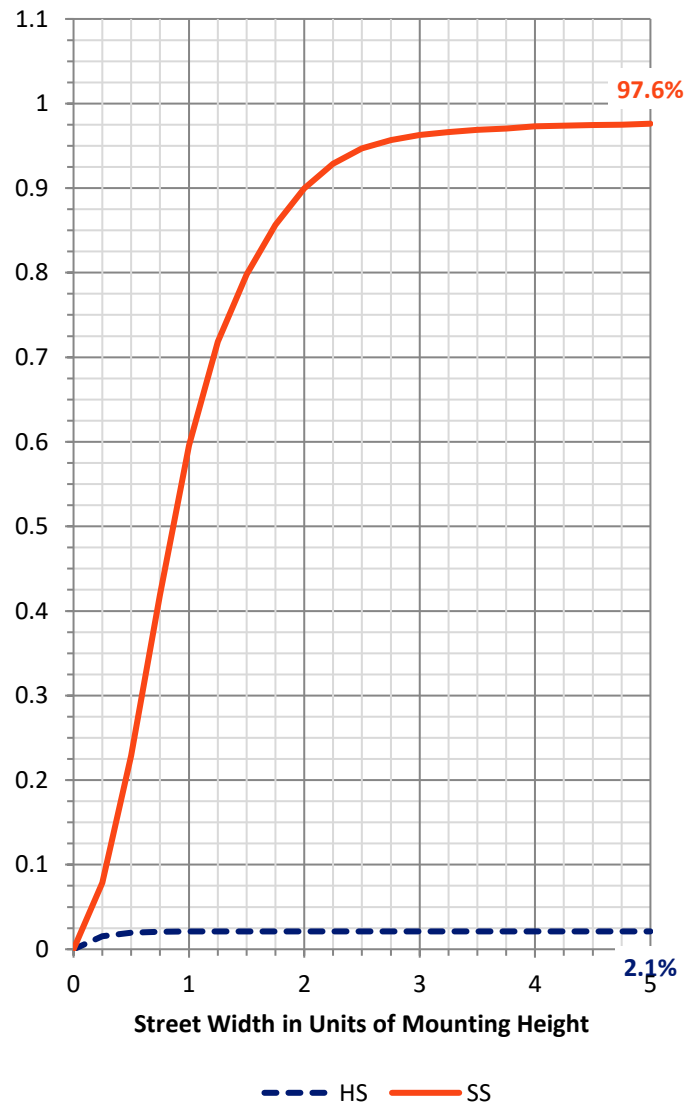
FLUX DISTRIBUTION:

		Downward	Upward	Total
House Side	Lumens	81.4	0.0	81.4
	% Fixture	2.1	0.0	2.1
Street Side	Lumens	3751.2	0.0	3751.2
	% Fixture	97.9	0.0	97.9
Total	Lumens	3832.6	0.0	3832.6
	% Fixture	100.0	0.0	100.0

Coefficient of Utilization

ZONAL LUMENS:

Zone	Lumens	% Fixture
0°-10°	16.2	0.4
10°-20°	63.0	1.6
20°-30°	128.0	3.3
30°-40°	312.7	8.2
40°-50°	699.4	18.2
50°-60°	983.4	25.7
60°-70°	1156.4	30.2
70°-80°	417.6	10.9
80°-90°	55.8	1.5
90°-100°	0.0	0.0
100°-110°	0.0	0.0
110°-120°	0.0	0.0
120°-130°	0.0	0.0
130°-140°	0.0	0.0
140°-150°	0.0	0.0
150°-160°	0.0	0.0
160°-170°	0.0	0.0
170°-180°	0.0	0.0
0°-90°	3832.6	100.0
0°-180°	3832.6	100.0



REPORT NUMBER: P149373

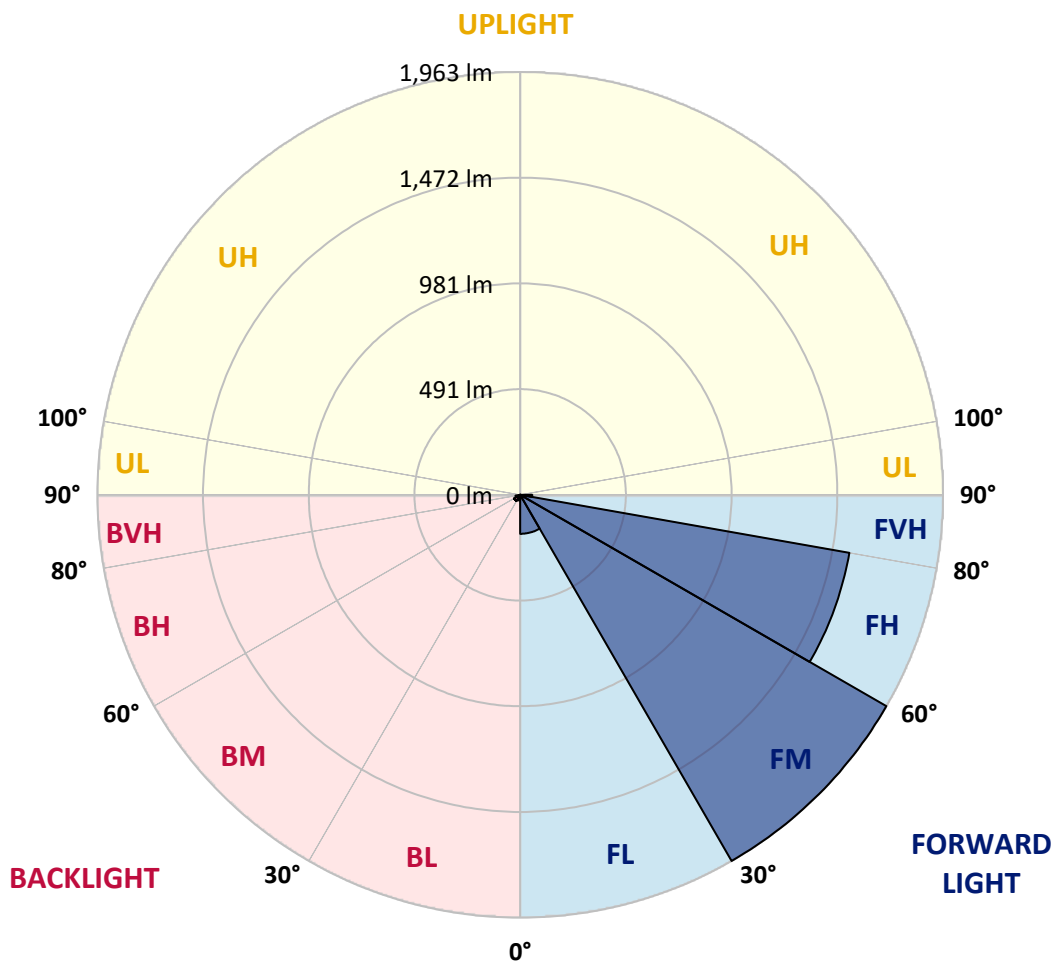
CATALOG NUMBER: VWM-F03-LED-E1-SL2-HSS-8030

LUMINAIRE CLASSIFICATION SYSTEM LUMEN TABLE AND BUG RATING:

Zone		Lumens	% Fixture	Zone Rating/Lumen Limit		
				B	U	G
FL	(0°-30°)	181.1	4.7			
FM	(30°-60°)	1962.7	51.2			
FH	(60°-80°)	1551.6	40.5			G1/1800
FVH	(80°-90°)	55.7	1.5			G1/100
BL	(0°-30°)	26.2	0.7	B0/110		
BM	(30°-60°)	32.8	0.9	B0/220		
BH	(60°-80°)	22.3	0.6	B0/110		G0/110
BVH	(80°-90°)	0.1	0.0			G0/10
UL	(90°-100°)	0.0	0.0		U0/0	
UH	(100°-180°)	0.0	0.0		U0/0	

BUG Rating: B0-U0-G1

Type II Short





REPORT NUMBER: P149373
 CATALOG NUMBER: VWM-F03-LED-E1-SL2-HSS-8030

CANDELA DISTRIBUTION (FULL):

	0°	5°	15°	25°	35°	45°	55°	56°	57°	58°	59°
0°	147.0	147.0	147.0	147.0	147.0	147.0	147.0	147.0	147.0	147.0	147.0
2.5°	192.3	194.4	193.0	189.5	185.3	179.8	174.9	174.9	174.2	172.1	172.8
5°	252.2	252.9	250.1	241.8	234.1	222.3	209.0	207.6	206.2	204.1	203.4
7.5°	310.7	313.5	310.7	301.7	286.4	268.2	247.3	245.3	241.1	241.1	238.3
10°	370.7	370.7	367.9	357.4	343.5	317.7	291.2	287.8	282.9	281.5	277.3
12.5°	413.2	413.2	411.8	406.2	395.0	372.1	340.0	336.5	330.3	328.2	323.3
15°	429.9	429.9	430.6	435.5	436.2	425.7	392.3	389.5	383.2	377.6	375.5
17.5°	440.3	439.6	439.6	446.6	459.1	466.1	444.5	441.7	434.8	432.0	425.0
20°	463.3	461.9	457.8	457.8	469.6	494.0	494.0	493.3	485.6	483.5	480.1
22.5°	497.5	496.1	483.5	473.1	478.7	509.3	537.9	536.5	533.7	530.9	528.8
25°	553.2	548.3	526.7	496.1	491.2	523.9	571.3	574.8	576.9	576.9	578.3
27.5°	637.5	631.2	592.9	535.8	514.2	547.6	608.3	615.2	621.5	622.9	629.2
30°	754.6	743.4	688.4	604.8	555.3	582.5	662.6	670.3	679.3	682.1	691.9
32.5°	946.9	940.6	887.6	762.2	656.3	650.8	738.5	748.3	760.1	765.0	776.9
35°	1239.5	1240.9	1197.7	1084.8	938.5	861.9	874.4	882.8	886.9	901.6	907.8
37.5°	1438.1	1441.5	1451.3	1406.7	1302.2	1224.2	1125.9	1135.0	1113.4	1115.5	1116.2
40°	1546.8	1557.9	1615.0	1658.2	1649.9	1604.6	1525.9	1530.7	1490.3	1481.3	1437.4
42.5°	1619.2	1633.8	1725.1	1858.9	1927.2	1968.3	1950.2	1948.1	1916.7	1904.9	1867.9
45°	1664.5	1677.7	1792.7	1989.9	2147.3	2267.2	2316.6	2322.2	2295.7	2283.9	2253.2
47.5°	1662.4	1677.7	1801.1	2038.6	2270.7	2462.3	2601.6	2608.6	2624.6	2614.2	2616.2
50°	1570.4	1585.1	1709.1	1955.7	2234.4	2551.4	2806.5	2828.7	2854.5	2871.9	2880.3
52.5°	1459.0	1469.4	1579.5	1813.6	2079.8	2514.5	2927.7	2966.0	3004.3	3037.1	3060.1
55°	1417.9	1429.7	1516.1	1710.5	1955.7	2359.8	2984.1	3040.6	3094.9	3148.5	3192.4
57.5°	1439.5	1450.6	1512.6	1661.7	1881.9	2196.8	3000.1	3087.9	3177.1	3264.2	3350.6
60°	1518.9	1530.7	1583.7	1707.0	1862.4	2102.7	2937.4	3083.1	3231.5	3383.3	3526.2
62.5°	1487.5	1492.4	1570.4	1786.4	2001.7	2022.6	2709.6	2913.1	3139.5	3373.6	3604.2
63°	1457.6	1463.1	1542.6	1764.8	2044.2	2010.8	2639.2	2853.8	3092.8	3345.0	3595.9
65°	1321.7	1322.4	1383.0	1558.6	1996.8	2031.7	2325.7	2530.5	2805.1	3107.4	3424.5
67.5°	986.6	981.7	1040.2	1174.0	1567.7	2032.4	1996.1	2111.1	2302.0	2570.3	2854.5
70°	349.8	342.1	436.9	622.2	976.8	1662.4	1715.4	1723.0	1776.0	1920.9	2099.3
72.5°	113.6	115.7	139.3	227.8	450.1	1119.0	1553.0	1529.3	1515.4	1514.7	1538.4
75°	45.3	46.0	55.7	101.0	202.1	539.3	1360.0	1373.3	1378.1	1385.1	1392.8
77.5°	21.6	23.7	31.4	56.4	100.3	266.8	973.3	1085.5	1149.6	1199.1	1229.0
80°	7.7	9.1	17.4	34.8	46.7	122.6	512.8	618.7	712.8	834.0	938.5
82.5°	0.0	0.0	3.5	24.4	25.8	49.5	210.4	246.6	282.2	365.8	469.6
85°	0.0	0.0	0.0	7.0	7.7	8.4	71.1	85.7	96.1	112.2	129.6
87.5°	0.0	0.0	0.0	0.0	0.0	0.0	0.7	2.1	4.2	10.5	16.0
90°	0.0	0.0	0.0	0.0	0.0	0.0	0.0	0.0	0.0	0.0	0.0



REPORT NUMBER: P149373
 CATALOG NUMBER: VWM-F03-LED-E1-SL2-HSS-8030

CANDELA DISTRIBUTION (continued):

	60°	61°	62°	64°	65°	66°	67°	68°	69°	70°	71°
0°	147.0	147.0	147.0	147.0	147.0	147.0	147.0	147.0	147.0	147.0	147.0
2.5°	171.4	170.7	170.7	169.3	168.6	167.2	166.5	164.4	163.7	163.7	163.7
5°	202.8	200.0	198.6	195.1	193.0	192.3	188.8	187.4	185.3	186.0	182.5
7.5°	237.6	232.7	230.6	225.7	224.3	219.5	218.1	214.6	212.5	208.3	206.9
10°	275.9	269.6	266.2	258.5	256.4	252.9	248.7	244.6	241.1	236.9	234.8
12.5°	319.8	314.2	311.4	301.0	296.1	291.2	285.7	280.1	274.5	271.0	266.2
15°	371.4	362.3	359.5	349.8	341.4	335.1	327.5	320.5	316.3	309.4	304.5
17.5°	422.2	413.2	411.1	396.4	387.4	383.2	374.8	365.8	358.1	351.2	343.5
20°	473.1	466.8	461.2	447.3	437.5	430.6	419.4	410.4	404.1	394.4	384.6
22.5°	523.9	517.7	513.5	498.9	489.8	480.1	470.3	460.5	451.5	439.6	428.5
25°	576.2	572.0	569.9	556.7	548.3	539.3	529.5	518.4	507.2	494.0	482.1
27.5°	630.5	631.9	627.8	625.0	615.9	609.6	594.3	586.7	578.3	562.3	547.6
30°	699.5	703.7	702.3	704.4	698.8	694.6	682.8	673.0	663.3	648.0	631.2
32.5°	786.6	792.2	795.0	802.6	799.9	798.5	795.0	781.0	774.1	747.6	740.6
35°	921.1	918.3	930.1	936.4	933.6	932.2	928.1	920.4	912.0	893.2	875.8
37.5°	1096.0	1098.8	1102.9	1090.4	1082.0	1081.3	1068.8	1061.1	1049.3	1028.4	1007.5
40°	1416.5	1399.0	1379.5	1326.6	1303.6	1290.4	1253.4	1243.0	1222.8	1194.2	1172.6
42.5°	1833.1	1815.7	1757.2	1668.7	1621.3	1555.8	1525.9	1488.9	1460.4	1413.7	1388.6
45°	2247.0	2196.8	2189.8	2086.7	2028.2	1941.8	1888.2	1826.1	1761.3	1700.0	1655.4
47.5°	2596.0	2584.9	2550.7	2488.0	2433.7	2361.2	2292.3	2196.8	2129.9	2042.8	1962.7
50°	2875.4	2874.7	2862.2	2826.0	2780.7	2722.1	2661.5	2580.7	2504.8	2398.2	2312.5
52.5°	3084.4	3095.6	3099.8	3088.6	3071.2	3019.7	2989.0	2921.4	2857.3	2766.7	2674.1
55°	3237.7	3278.8	3299.7	3323.4	3318.6	3300.4	3299.0	3255.1	3225.9	3154.1	3088.6
57.5°	3427.2	3494.8	3559.6	3674.6	3678.8	3719.2	3740.1	3761.0	3766.6	3738.0	3716.4
60°	3668.3	3806.3	3928.9	4169.3	4232.0	4330.9	4395.0	4464.7	4523.9	4528.8	4527.4
62.5°	3838.3	4050.8	4248.7	4605.4	4727.4	4841.6	4927.3	4994.9	5036.0	5077.8	5097.3
63°	3843.2	4075.9	4286.3	4654.2	4782.4	4891.1	4972.6	5035.3	5078.5	5103.6	5116.1
65°	3725.4	4007.6	4258.4	4624.9	4745.5	4854.9	4897.4	4938.5	4959.4	4969.1	4932.2
67.5°	3157.6	3433.5	3726.1	4135.8	4238.9	4369.9	4404.8	4425.7	4435.4	4433.3	4402.0
70°	2361.2	2592.6	2917.9	3386.1	3522.7	3650.9	3730.3	3764.5	3775.6	3772.1	3725.4
72.5°	1648.5	1784.3	2052.6	2573.7	2759.8	2924.2	3022.4	3073.3	3083.8	3062.8	3019.7
75°	1384.4	1391.4	1452.0	1737.0	1911.1	2086.7	2197.5	2229.6	2208.7	2145.2	2035.2
77.5°	1236.0	1251.3	1251.3	1293.8	1328.0	1376.7	1387.2	1309.2	1218.6	1101.5	1006.8
80°	1036.7	1090.4	1128.0	1159.4	1162.9	1153.1	1127.3	1083.4	1013.8	924.6	825.6
82.5°	629.8	735.8	779.0	940.6	1020.0	1073.7	1069.5	1011.0	958.0	865.3	781.0
85°	158.9	171.4	186.0	241.8	271.0	330.9	368.6	386.0	392.3	360.2	326.1
87.5°	15.3	10.5	17.4	13.2	18.8	13.9	18.8	17.4	21.6	23.0	25.1
90°	0.0	0.0	0.0	0.0	0.0	0.0	0.0	0.0	0.0	0.0	0.0



REPORT NUMBER: P149373

CATALOG NUMBER: VWM-F03-LED-E1-SL2-HSS-8030

CANDELA DISTRIBUTION (continued):

	72°	73°	74°	75°	76°	77°	78°	79°	80°	81°	82°
0°	147.0	147.0	147.0	147.0	147.0	147.0	147.0	147.0	147.0	147.0	147.0
2.5°	162.3	161.6	160.9	160.2	159.6	158.9	157.5	157.5	156.1	155.4	154.7
5°	180.5	179.1	178.4	177.0	174.9	173.5	171.4	168.6	166.5	165.8	164.4
7.5°	203.4	200.0	198.6	196.5	193.7	189.5	186.7	184.6	181.2	179.1	174.9
10°	229.2	225.7	221.6	217.4	213.2	208.3	204.8	202.1	196.5	193.7	188.8
12.5°	262.0	255.7	250.8	245.3	239.7	234.1	229.9	221.6	216.7	210.4	206.2
15°	295.4	289.8	284.3	277.3	268.9	259.9	255.7	248.0	241.8	232.0	226.4
17.5°	335.8	325.4	317.0	308.7	301.0	292.6	284.3	272.4	263.4	255.0	243.9
20°	375.5	363.0	353.9	342.8	331.6	318.4	308.7	300.3	287.8	276.6	264.8
22.5°	418.0	405.5	390.9	379.7	364.4	353.9	340.7	326.8	314.2	299.6	285.0
25°	469.6	456.4	439.6	425.0	407.6	393.0	376.9	360.9	345.6	328.9	310.0
27.5°	533.0	519.1	501.0	483.5	460.5	442.4	427.1	405.5	386.0	365.1	343.5
30°	613.1	597.8	575.5	550.4	527.4	507.2	485.6	457.1	435.5	410.4	382.5
32.5°	717.6	699.5	669.6	645.9	617.3	590.8	560.9	532.3	501.6	468.9	436.9
35°	849.3	832.6	797.8	762.9	731.6	700.2	662.6	629.8	586.7	546.9	505.8
37.5°	985.9	955.9	923.9	886.2	847.2	809.6	763.6	718.3	668.9	625.7	574.1
40°	1141.9	1105.7	1079.2	1038.8	983.8	930.1	887.6	831.2	769.2	711.4	650.8
42.5°	1355.8	1315.4	1268.1	1206.7	1167.0	1104.3	1049.3	982.4	900.9	836.1	762.9
45°	1603.2	1548.1	1502.2	1442.9	1394.9	1316.8	1252.7	1163.5	1082.0	997.0	907.8
47.5°	1885.4	1817.1	1750.2	1691.7	1615.0	1538.4	1456.9	1362.1	1257.6	1164.2	1058.3
50°	2209.3	2112.5	2019.8	1944.6	1839.4	1750.9	1662.4	1555.8	1440.2	1332.9	1212.3
52.5°	2569.6	2457.4	2334.8	2219.1	2097.2	1983.6	1877.0	1754.4	1625.5	1494.5	1360.0
55°	3004.3	2920.0	2775.8	2628.8	2465.7	2313.9	2176.6	2024.7	1867.9	1695.9	1554.4
57.5°	3685.0	3643.9	3523.4	3376.4	3163.9	2979.2	2746.5	2560.5	2333.4	2096.5	1913.9
60°	4607.5	4556.7	4489.1	4369.9	4201.3	3950.5	3694.1	3404.9	3059.4	2731.2	2419.8
62.5°	5099.4	5081.3	5026.3	4944.0	4786.6	4588.7	4330.2	4012.5	3622.3	3223.8	2826.7
63°	5114.0	5091.0	5043.7	4960.1	4821.4	4629.8	4376.2	4067.5	3685.7	3279.5	2874.0
65°	4916.2	4907.1	4859.0	4767.8	4673.0	4526.7	4330.2	4064.8	3744.3	3360.4	2956.9
67.5°	4360.2	4333.0	4259.1	4231.3	4165.1	4063.4	3913.6	3731.0	3501.8	3200.1	2851.7
70°	3687.8	3647.4	3554.7	3505.3	3424.5	3360.4	3269.1	3138.8	2997.4	2786.9	2527.1
72.5°	2975.1	2891.5	2806.5	2677.6	2564.7	2450.4	2349.4	2257.4	2102.1	2017.0	1819.9
75°	1932.0	1780.2	1634.5	1439.5	1263.9	1108.5	957.3	880.7	721.1	656.3	563.7
77.5°	916.9	831.9	717.6	629.2	516.3	421.5	344.2	258.5	202.8	158.9	121.2
80°	739.9	668.2	599.2	519.1	434.1	346.3	265.5	198.6	140.7	97.5	69.0
82.5°	659.8	581.8	496.8	441.7	383.9	314.2	257.8	210.4	155.4	113.6	77.3
85°	256.4	216.0	166.5	135.9	105.9	87.1	78.7	54.3	42.5	33.4	25.8
87.5°	22.3	18.1	14.6	9.8	10.5	5.6	6.3	4.2	3.5	3.5	2.8
90°	0.0	0.0	0.0	0.0	0.0	0.0	0.0	0.0	0.0	0.0	0.0



REPORT NUMBER: P149373

CATALOG NUMBER: VWM-F03-LED-E1-SL2-HSS-8030

CANDELA DISTRIBUTION (continued):

	83°	84°	85°	86°	87°	88°	89°	90°	95°	105°	115°
0°	147.0	147.0	147.0	147.0	147.0	147.0	147.0	147.0	147.0	147.0	147.0
2.5°	154.0	153.3	152.6	151.2	151.2	149.8	149.1	148.4	144.9	137.3	131.0
5°	161.6	160.2	158.9	156.8	155.4	153.3	151.9	149.8	142.1	127.5	115.0
7.5°	172.8	170.0	167.9	163.7	161.6	158.9	156.8	153.3	140.7	118.4	101.0
10°	186.0	181.2	177.7	172.8	168.6	165.1	161.6	156.8	139.3	108.7	88.5
12.5°	202.1	196.5	189.5	183.9	178.4	173.5	168.6	162.3	137.3	100.3	78.7
15°	218.1	209.7	204.8	197.2	189.5	182.5	175.6	170.0	138.0	91.3	70.4
17.5°	236.2	227.8	217.4	209.0	200.7	191.6	183.2	172.1	134.5	84.3	64.1
20°	253.6	241.8	232.0	221.6	209.7	198.6	188.1	178.4	131.7	77.3	58.5
22.5°	272.4	258.5	245.9	232.7	218.1	205.5	193.0	180.5	126.8	71.1	53.6
25°	295.4	279.4	261.3	245.3	229.9	214.6	198.6	183.2	121.9	65.5	50.2
27.5°	323.3	302.4	284.3	264.1	242.5	223.0	205.5	188.8	117.1	61.3	46.7
30°	358.8	334.4	308.7	282.9	259.9	237.6	213.2	192.3	112.2	57.1	43.2
32.5°	406.2	375.5	344.2	314.2	283.6	255.0	229.2	202.1	109.4	53.6	39.7
35°	468.9	429.2	390.9	353.2	316.3	281.5	248.0	217.4	109.4	49.5	35.5
37.5°	528.1	482.1	433.4	386.7	342.8	302.4	262.7	225.7	103.8	46.0	32.0
40°	592.2	537.2	480.1	425.0	372.1	321.9	276.6	234.1	98.9	41.8	28.6
42.5°	690.5	620.8	546.2	482.1	418.7	356.7	300.3	250.1	92.7	37.6	25.1
45°	819.4	730.9	643.1	565.1	484.2	408.3	341.4	279.4	91.3	34.1	21.6
47.5°	957.3	852.8	749.7	650.1	555.3	466.8	386.7	312.1	91.3	30.7	18.8
50°	1094.6	963.6	853.5	737.8	631.2	526.7	431.3	346.3	92.0	27.9	15.3
52.5°	1218.6	1078.5	955.2	821.5	703.7	582.5	478.7	379.7	90.6	24.4	12.5
55°	1390.7	1226.3	1083.4	935.7	797.8	661.2	543.5	429.9	91.3	21.6	10.5
57.5°	1707.7	1514.7	1342.6	1148.9	990.1	813.8	671.0	533.0	99.6	18.1	7.7
60°	2162.7	1911.8	1670.1	1433.9	1231.8	1022.1	836.8	674.4	117.1	14.6	5.6
62.5°	2468.5	2140.4	1851.9	1591.3	1356.5	1137.1	935.0	750.4	128.9	11.8	3.5
63°	2499.9	2160.6	1870.7	1601.8	1362.1	1142.6	939.2	756.0	129.6	11.1	3.5
65°	2559.1	2195.4	1881.2	1603.9	1356.5	1135.0	936.4	755.3	131.0	9.1	2.8
67.5°	2491.5	2141.8	1820.6	1544.0	1307.8	1089.7	901.6	727.4	130.3	6.3	2.1
70°	2228.2	1938.3	1656.1	1398.3	1183.8	986.6	820.8	663.3	119.8	4.2	1.4
72.5°	1635.9	1438.8	1220.0	1034.0	891.8	740.6	631.9	498.2	92.7	2.8	0.7
75°	484.9	441.7	371.4	327.5	289.1	239.0	212.5	165.8	47.4	1.4	0.0
77.5°	96.8	87.8	78.7	71.8	67.6	57.8	55.0	45.3	19.5	0.7	0.0
80°	50.9	41.8	35.5	31.4	27.2	22.3	18.8	15.3	3.5	0.0	0.0
82.5°	48.8	32.7	23.7	19.5	16.7	13.2	10.5	7.7	2.1	0.0	0.0
85°	18.1	13.9	10.5	8.4	7.0	6.3	4.9	4.2	0.0	0.0	0.0
87.5°	2.8	2.1	2.1	1.4	1.4	0.7	0.7	0.7	0.0	0.0	0.0
90°	0.0	0.0	0.0	0.0	0.0	0.0	0.0	0.0	0.0	0.0	0.0



REPORT NUMBER: P149373

CATALOG NUMBER: VWM-F03-LED-E1-SL2-HSS-8030

CANDELA DISTRIBUTION (continued):

	125°	135°	145°	155°	165°	175°	180°
0°	147.0	147.0	147.0	147.0	147.0	147.0	147.0
2.5°	124.7	119.1	116.4	112.9	112.9	112.2	113.6
5°	103.8	96.1	90.6	86.4	87.1	85.0	85.7
7.5°	87.8	80.1	75.2	72.5	71.8	71.1	71.1
10°	75.9	69.0	64.8	62.7	62.0	62.0	62.0
12.5°	67.6	60.6	57.1	55.7	55.7	55.0	55.0
15°	60.6	55.0	51.6	50.2	50.2	49.5	50.2
17.5°	55.0	49.5	46.7	45.3	45.3	44.6	44.6
20°	50.2	45.3	42.5	40.4	40.4	39.7	40.4
22.5°	46.0	41.1	37.6	36.2	35.5	34.8	35.5
25°	41.8	36.9	33.4	31.4	30.7	30.7	30.0
27.5°	38.3	33.4	29.3	27.2	26.5	26.5	25.8
30°	34.8	29.3	25.1	23.0	22.3	22.3	22.3
32.5°	31.4	25.1	21.6	19.5	18.8	18.8	18.8
35°	27.9	21.6	18.1	16.0	15.3	15.3	15.3
37.5°	23.7	18.1	13.9	12.5	11.8	11.1	11.1
40°	20.2	13.9	10.5	9.1	7.7	7.7	7.7
42.5°	16.7	11.1	7.7	5.6	4.9	4.2	4.9
45°	13.9	8.4	4.9	2.8	2.1	2.1	2.1
47.5°	11.1	5.6	2.1	0.7	0.7	0.7	0.7
50°	8.4	3.5	0.7	0.0	0.0	0.7	0.7
52.5°	6.3	2.1	0.0	0.0	0.0	0.0	0.0
55°	3.5	0.7	0.0	0.0	0.0	0.0	0.0
57.5°	2.1	0.0	0.0	0.0	0.0	0.0	0.0
60°	1.4	0.0	0.0	0.0	0.0	0.0	0.0
62.5°	0.7	0.0	0.0	0.0	0.0	0.0	0.0
63°	0.7	0.0	0.0	0.0	0.0	0.0	0.0
65°	0.7	0.0	0.0	0.0	0.0	0.0	0.0
67.5°	0.0	0.0	0.0	0.0	0.0	0.0	0.0
70°	0.0	0.0	0.0	0.0	0.0	0.0	0.0
72.5°	0.0	0.0	0.0	0.0	0.0	0.0	0.0
75°	0.0	0.0	0.0	0.0	0.0	0.0	0.0
77.5°	0.0	0.0	0.0	0.0	0.0	0.0	0.0
80°	0.0	0.0	0.0	0.0	0.0	0.0	0.0
82.5°	0.0	0.0	0.0	0.0	0.0	0.0	0.0
85°	0.0	0.0	0.0	0.0	0.0	0.0	0.0
87.5°	0.0	0.0	0.0	0.0	0.0	0.0	0.0
90°	0.0	0.0	0.0	0.0	0.0	0.0	0.0

(END OF REPORT)